



OLD COURT HOUSE.

New Castle, Delaware

THE second largest City in the State, situated along the Delaware River, thirty-five miles nearer the head of the Bay than Philadelphia, and within seven miles of the Chesapeake and Delaware Canal.

Our harbor is safe and convenient, with twenty-four feet of water at low tide.

We have just completed a large concrete wharf at the foot of our main street, where boats can land free of charge.

There are a number of free sites for any line of manufacture, and also cheap



HOME OF GEORGE PIERCE.

LOUISE HOTEL.
COURT HOUSE SQUARE

MASONIC TEMPLE.

land along the river, suitable for blast furnaces, with plenty of low land for dumping slag, etc.

We have several miles of good level land fronting on the Delaware Division of the Pennsylvania Railroad, only one hour's ride from Philadelphia, and three hours from New York, with good train service.

The labor question is one that must be considered, and is of prime importance in the selection of a location for industrial plants. We can offer an abundance of both skilled and unskilled labor, that would supply any industry with male and female help.

We have, at present, four steel casting plants, a fiber plant, water and electric light plant, and also a trolley and gas company.

The Bethlehem Steel Company, who purchased a river front of fifty acres,



HOME OF DAVID BOULDEN.

VIEW ON DELAWARE STREET, LOOKING WEST FROM THIRD STREET

HOME OF MAYOR RICHARD S. RODNEY.

have completed a four hundred foot wharf, and are erecting a number of buildings that will be finished in the early Spring.

As a residential city, New Castle is ideal, with a population of forty-five hundred. We have just expended fifty thousand dollars on street improvements, with more in prospect. Our death rate is low, climatic conditions good, with churches and schools of all denominations.

Socially, we are glad to give the right hand of fellowship to all newcomers.

Our bonded indebtedness is only forty-five thousand dollars, with an assessed valuation of one million eight hundred thousand dollars (\$1,800,000.00).

William Penn "granted in 1704, for the accommodation of the inhabitants of the Town of New Castle" a thousand acres of land, the rental of which is used for municipal purposes.



HOMES OF J. T. AND L. E. ELIASON,

VIEW ALONG FIFTH STREET, LOOKING NORTH FROM SOUTH STREET

In conclusion, we would remind you of

Our fine harbor,

Modern improvements,

Natural advantages,

Free sites on rail, and cheap sites on water front,

Excellent transportation facilities,

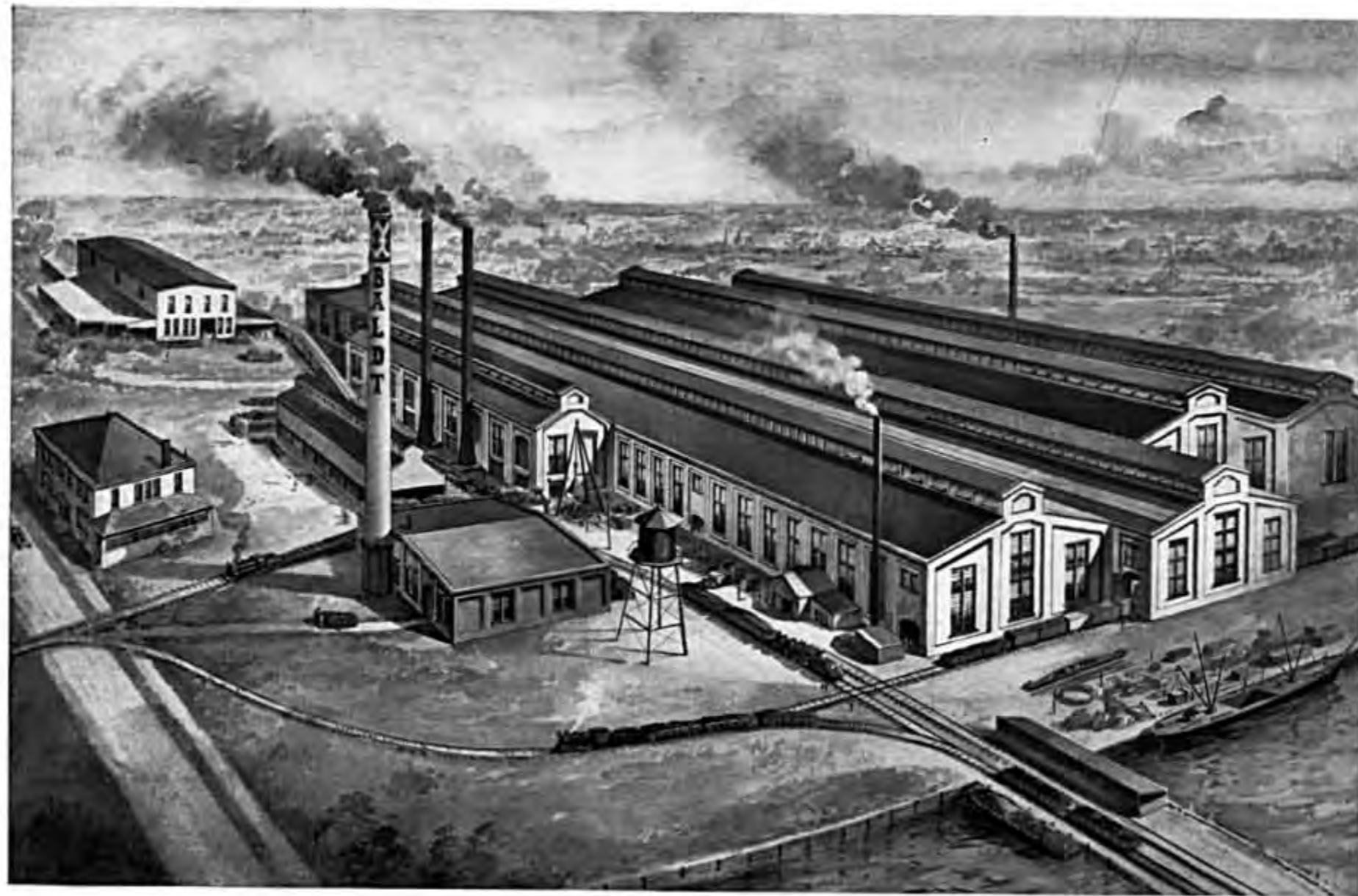
Easy access to large cities,

Skilled and available labor,

A low tax rate, with delightful climate,

And exemption from City taxes to *manufacturers for ten years.*

The pictorial views will give an idea of our City in general.



BALDT STEEL COMPANY.



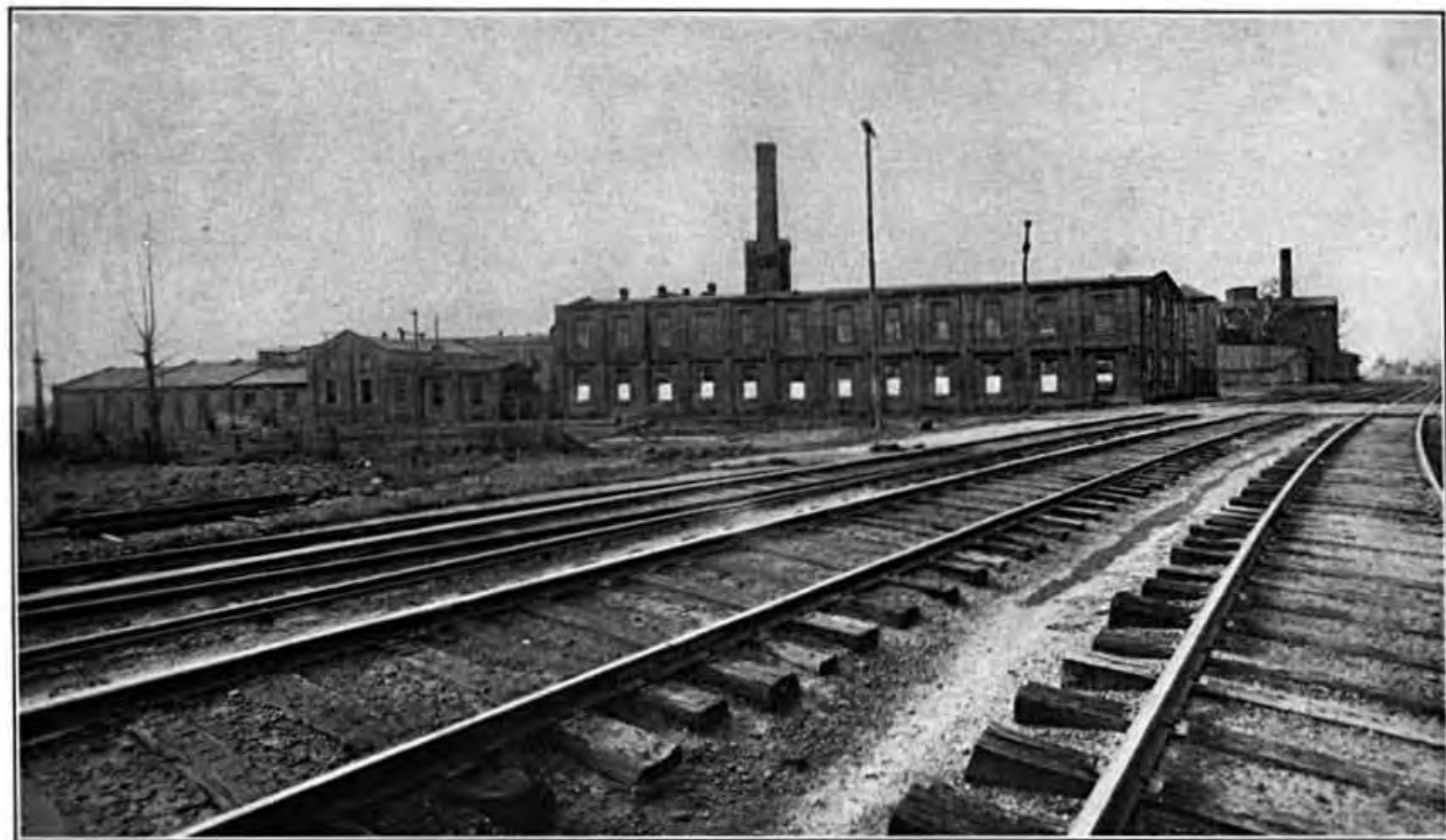
EDGAR ALLEN AMERICAN MANGANESE STEEL CO.



NEW BUILDING IN COURSE OF ERECTION OF THE BETHLEHEM STEEL CO.



BRYLGON STEEL CASTING COMPANY.



WILMINGTON FIBRE SPECIALTY CO., NEW CASTLE PLANT.



DEEMER STEEL CASTING CO.

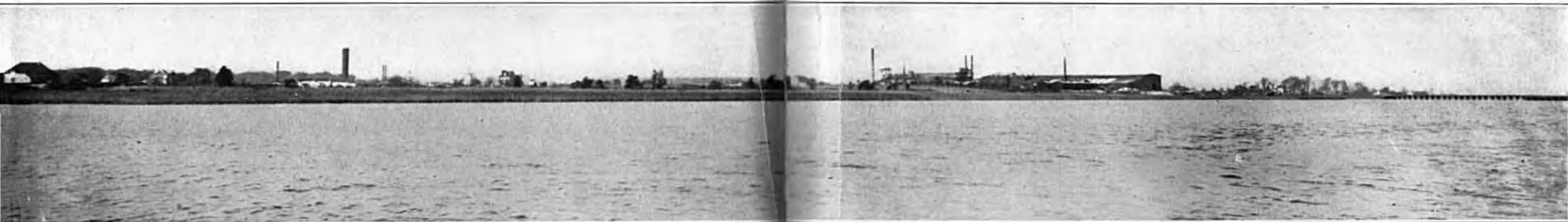
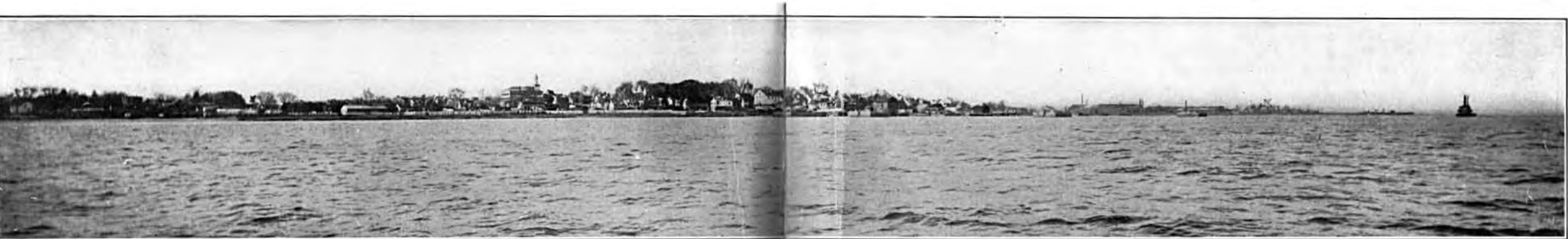


WATER WORKS.

POWER HOUSE OF WILMINGTON & SOUTHERN TRACTION CO.



THE STRAND LOOKING SOUTH FROM HARMONY ST.

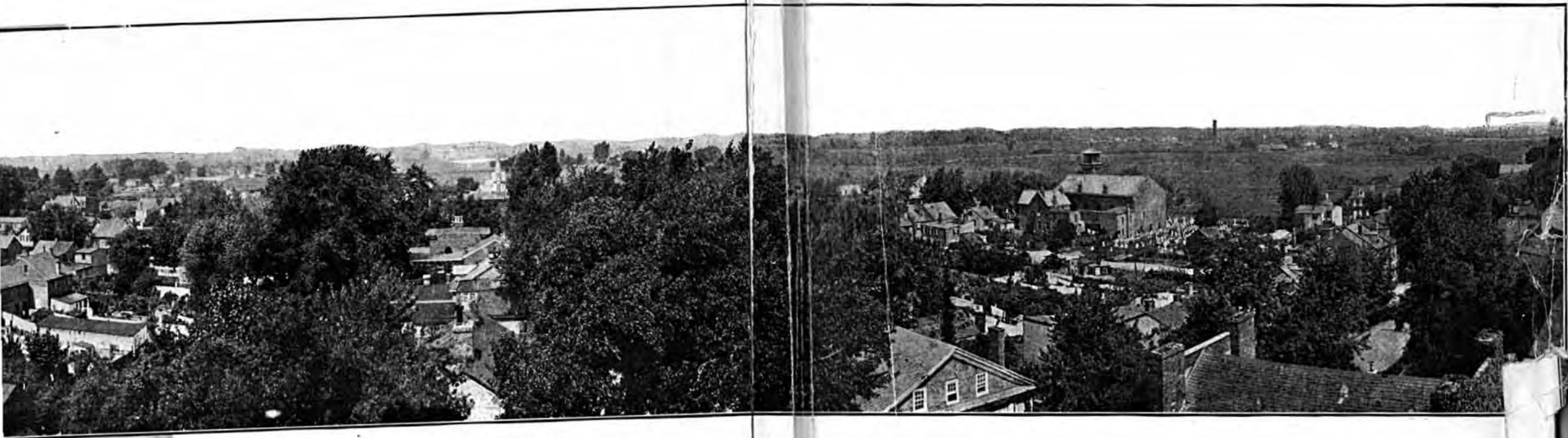


RIVER FRONT VIEWS



BIRD'S EYE VIEW OF NEW CASTLE, LOOKING NORTH





BIRD'S EYE VIEW OF NEW CASTLE, LOOKING SOUTH



HOME OF FRANK DE H. JANVIER.



HOME OF MRS. LOUISE HOLCOMB.



HOME OF LAUSAT ROGERS.

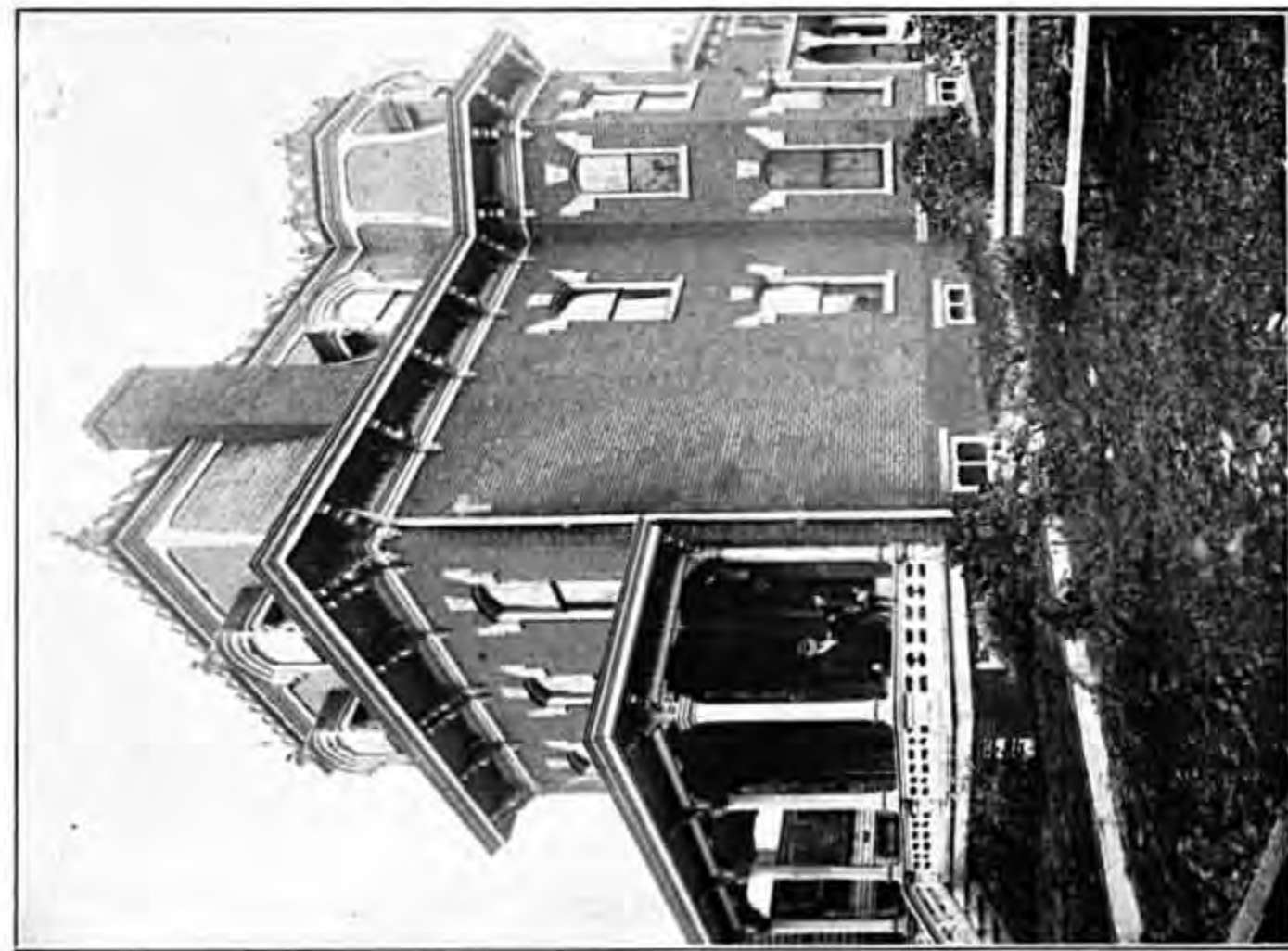


HOME OF A. V. LESLIE GEORGE.

HOME OF ANDREW BRYSON.



HOME OF A. H. PADBERG.



HOME OF C. F. PFROMMER.



HOME OF JOHN R. LAMBSON.



HOME OF PROF. HAY.



METHODIST CHURCH.



PRESBYTERIAN CHURCH.



ST. PETER'S CATHOLIC CHURCH.



PAROCHIAL SCHOOL.



IMMANUEL CHURCH.



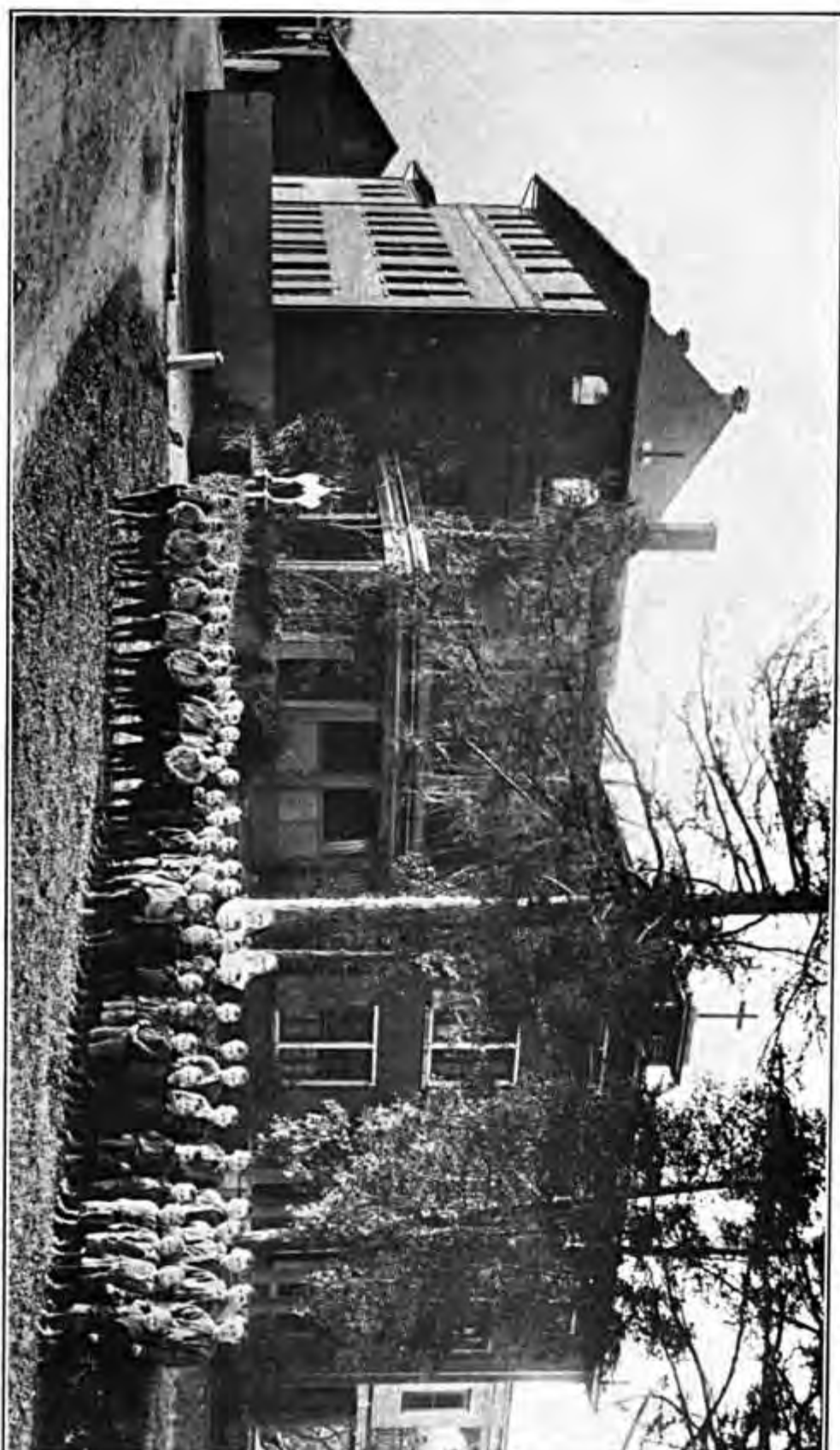
PARISH HOUSE.



BAPTIST CHURCH.



GOOD WILL FIRE CO.



ST. JAMES PROTECTORY.